

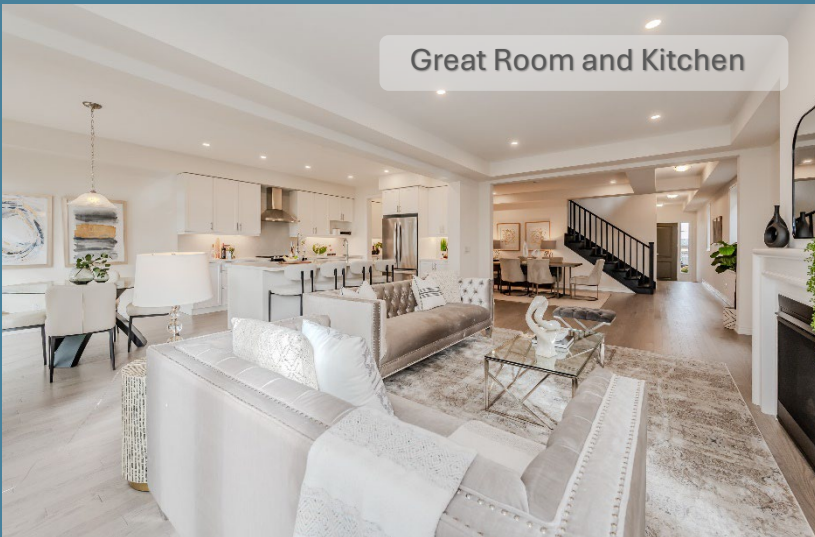


The Westwood

Elevation C
Lot 347

3,625 sq. ft.
(Including 833 sq. ft. of Finished Lower Level)

\$ 1,441,900



Great Room and Kitchen



Kitchen

- This home features a double car garage and double driveway
- 4 Bedrooms + 3 ½ Bathrooms
- Open concept Kitchen and Great Room
- Fenced rear yard with deck and beautiful mature trees
- Mud Room off the garage
- Finished Lower Level
 - Recreation Room
 - 3-piece Bathroom
 - 9' ceiling *
- 30 day Closing

More luxury features

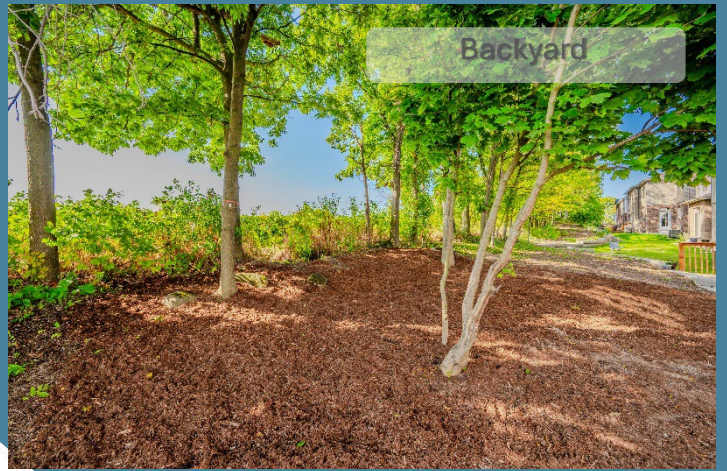
Sales Office
127 Rosenberg Way
905-874-4741

wallaceton@heathwood.com

HEATHWOOD



Principal Ensuite



Backyard

Key Highlights

- ❖ 9' ceiling on Main Floor *
- ❖ Luxurious oak hardwood on Main Level **
- ❖ Gas Fireplace with elegant mantle in Great Room
- ❖ Waffle ceiling in Great Room
- ❖ Coffered ceiling in Dining Room
- ❖ Big bright windows throughout
- ❖ Kitchen Servery with upper and lower cabinets
- ❖ Tray ceiling detail in Principal Suite
- ❖ Second Level Laundry Room with washer/dryer and upper cabinets
- ❖ Large closet in Mud Room
- ❖ A shared bath between bedroom 2 and 3
- ❖ Bedroom 4 with full ensuite that includes a standalone shower

Kitchen

- Appliance Package
- Island with breakfast bar
- Hardwood flooring
- Stainless Steel Chimney Hoodfan
- Valance lighting
- Garbage drawer cabinet
- Backsplash

Electrical

- Pot lights throughout
- Doorbell Camera
- Security Cameras
- Mechanicals include
 - Forced air furnace
 - ERV
 - AC
- Alarm System (Monitoring not included)
- Exterior pot lights
- 200 AMP

Principal Ensuite

- Extra large Frameless glass shower
- Freestanding soaker tub
- Two vanities with Quartz counters and undermount sinks



Dining Room



Finished Lower Level

* Except where beams and heating equipment are required. **As per plan. Prices and specifications are subject to change without notice. E. & O.E. October 2024